



TECHNICAL BRIEF | #2019-01

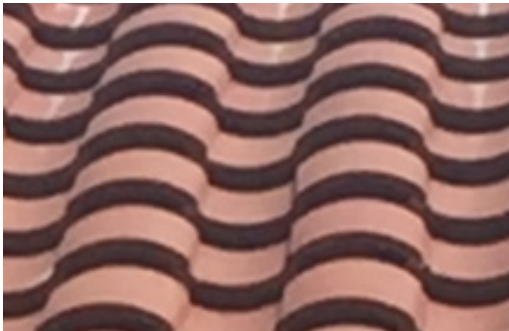
Hip and Ridge Mortar Generated Surface Efflorescence

The use of mortar for the attachment and weather blocking of hip and ridge tiles is a code approved option for tile installations. When mortar is used as a component, either for fastening or weather blocking, there is the opportunity for hip and ridge mortar generated efflorescence to occur on the surface of the underlying roof tiles. The amount of mortar, water content and weather conditions can impact the amount of efflorescence that might occur.

Efflorescence is a temporary surface discoloration common to all concrete based building materials including mortar and concrete roof tiles. It is superficial and in no way detrimental to the overall quality, structural integrity, or functional properties of the tile.

Efflorescence is caused by the chemical nature of the cement. Manufactured cement contains free lime, and when water is added, a series of chemical reactions take place. These reactions are accompanied by the release of calcium hydroxide, which can form an overall "white chalky" crystalline salt deposit on the tile surface

when reacting with carbon dioxide. This reaction can appear as an overall "bloom" (overall softening of color) or in more concentrated patches.



Picture of superficial efflorescence caused by the mortar installed at the ridge.



It is difficult to predict how long the effects of efflorescence will last. It depends on the type and amount of deposit as well as the local weather conditions. In most cases the action of carbon dioxide and rainwater will gradually remove the deposit.

The manufacturer of the mortar materials may help provide additional methods for reducing, sealing or cleaning efflorescence created by their products.

For more information on our tile products, please visit our website at tileroofing.org or email info@tileroofing.org for specific inquiries.

TRI ALLIANCE
2150 N 107th Street
Suite 205
Seattle, WA 98133
P 206-209-5300
E info@tileroofing.org
tileroofing.org